



VL MPO Handbook

An Equal Opportunity Employer / Program

327 W. Savannah Ave., Valdosta, GA 31601
1725 S. Ga. Parkway, W., Waycross, GA 31503

Phone (229) 333-5277 • Fax (229)-333-5312
Phone (912) 285-6097 • Fax (912) 285-6126

www.sgrc.us

A Brief History of the Valdosta-Lowndes Metropolitan Planning Organization

In May 2002, the U. S. Department of Commerce, Bureau of the Census officially designated Valdosta a new Urbanized Area. The Federal Highway Act of 1962 requires that urbanized areas have a Comprehensive, Continuous, Cooperative transportation planning process (3-C process).

In April 2003, Governor Sonny Perdue officially designated the South Georgia Regional Development Center as the Metropolitan Planning Organization for the Valdosta Urbanized Area. As the MPO, the SGRDC is responsible for carrying out transportation planning in the Metropolitan Planning Area using funding received from the US Department of Transportation's Federal Highway Administration and Federal Transit Administration, administered by the Georgia Department of Transportation. The MPO works with these and other transportation planning partners to fulfill the requirements of various federal, state and local transportation planning laws and plans.

Organizationally, the MPO consists of three committees; the Policy Committee, the Transportation Coordinating Committee (TCC), and the Citizen's Advisory Committee (CAC). The Policy Committee is the regional forum for cooperative decision-making by principal local elected officials, FHWA, GDOT, and other planning partners. The TCC is a technical committee of professionals advising the policy committee on technical matters relating to transportation plans and programs. The TCC is made up of city and county engineers, GDOT District engineers, GDOT planners, local school board representatives, bike and pedestrian advocates, and emergency response officials. The CAC serves as a public information and involvement committee that represents a cross section of the community in diversity and interests.

The MPO is responsible for developing a continuing, comprehensive, and cooperative transportation planning process that includes long range planning, short range improvement programs, public involvement programs, and an annual program of work activities. In addition to these four main documents and plans, the Valdosta-Lowndes MPO works in a broad range of planning areas to ensure a comprehensive transportation planning foundation for the community. These topic areas include: socioeconomic analysis, travel demand modeling, freight movement planning, intelligent transportation systems, maintenance and operations, safety and security planning, transit planning, bike and pedestrian planning, environmental mitigation, context sensitive solutions, access management, land use planning and others.

Today the SGRDC and the VLMPO continue to provide quality comprehensive, cooperative, and continuous transportation planning in the Valdosta Urbanized Area.

An Equal Opportunity Employer / Program

Metropolitan Transportation Planning

- Core Functions of the MPO
 - Establish a setting/forum for regional decisionmaking
 - Evaluate alternatives for transportation improvement options
 - Prepare/Maintain Transportation Plan
 - Develop Transportation Improvement Program
 - Involve the Public

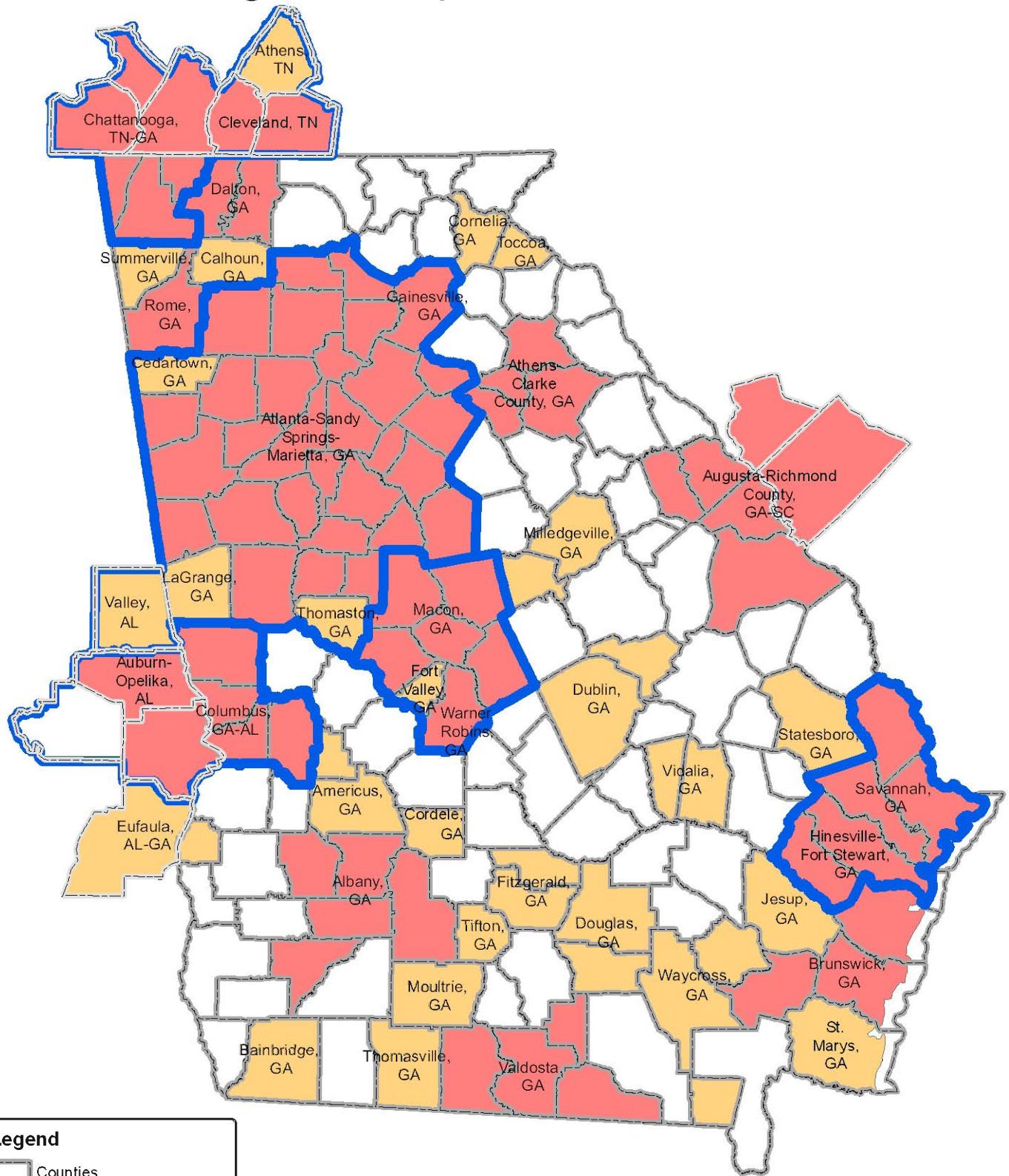


What is an MPO's Role?

- Carry out metropolitan transportation planning in cooperation with the state and with operators of publicly owned transit services
- Provide an overall coordination role in planning and programming funds for projects and operations.
- Involve local transportation providers in the planning process by including transit agencies, state and local highway departments, airport authorities, maritime operators, rail-freight operators, Amtrak, port operators, private providers of public transportation, and others



Georgia Metropolitan Statistical Areas



Legend

- Counties
- Combined Statistical Areas

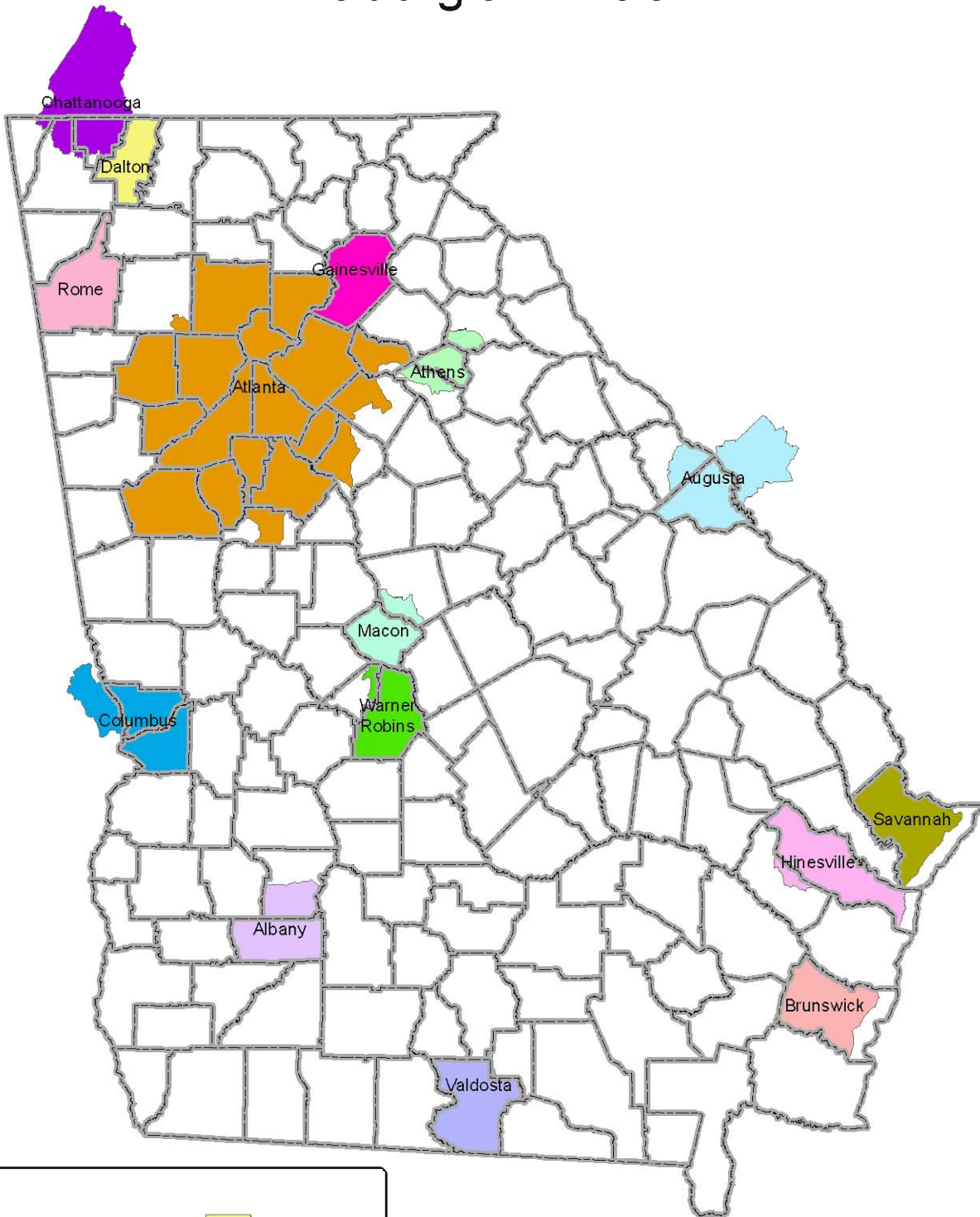
Core Based Statistical Areas

TYPE

- METRO
- MICRO



Georgia MPOs

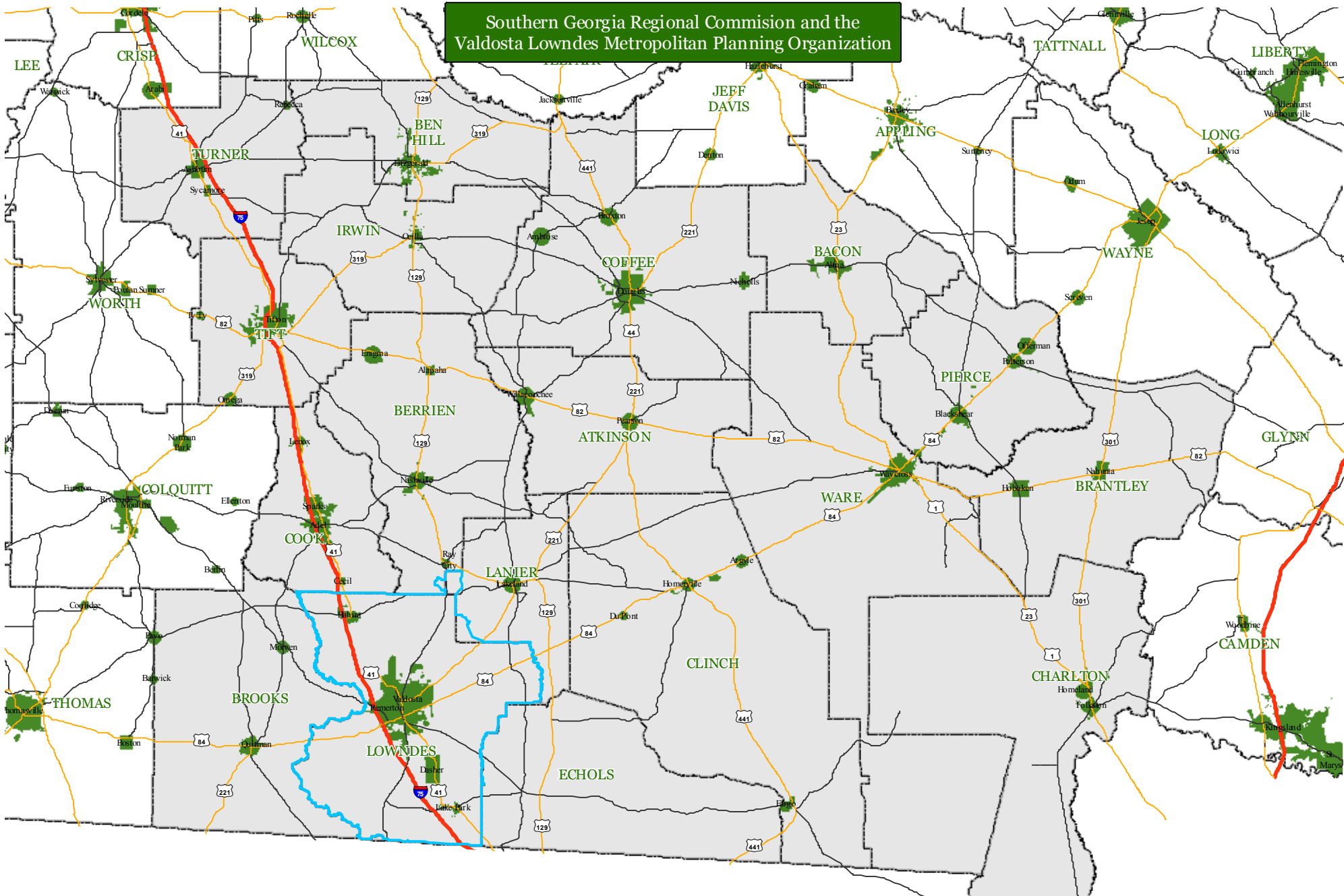


Legend







- | | |
|--|---|
|  Counties |  Dalton |
| Metropolitan Planning Organizations |  Gainesville |
|  Albany |  Hinesville |
|  Athens |  Macon |
|  Atlanta |  Rome |
|  Augusta |  Savannah |
|  Brunswick |  Valdosta |
|  Chattanooga |  Warner Robins |
|  Columbus | |



Southern Georgia Regional Commission and the
Valdosta Lowndes Metropolitan Planning Organization



Legend

-  Valdosta Metropolitan Planning Area
-  State Highway
-  U.S. Highway
-  Interstate Highway
-  Cities
-  SGRC Counties



Southern Georgia Regional Commission Population Matrix for Metropolitan and Miropolitan Areas

	County/City	2000 Pop.	2010 Pop.	MSA/ μ SA	MPO
	Atkinson	7,609	8,375	<i>Douglas</i>	
1	Pearson	1,805	2,117	<i>Douglas</i>	
2	Willachoochee	1,434	1,391	<i>Douglas</i>	
	Bacon	10,103	11,096		
3	Alma	3,236	3,466		
	Ben Hill	17,484	17,634	<i>Fitzgerald</i>	
4	Fitzgerald	8,758	9,053	<i>Fitzgerald</i>	
	Berrien	16,235	19,286		Valdosta
5	Alapaha	682	668		
6	Enigma	869	1,278		
7	Nashville	4,697	4,939		
8	Ray City	746	1,090		
	Brantley	14,629	18,411	Brunswick	
9	Hoboken	463	528	Brunswick	
10	Nahunta	930	1,053	Brunswick	
	Brooks	16,450	16,243	Valdosta	
11	Barwick	444	386	Valdosta	
12	Morven	634	565	Valdosta	
13	Pavo	711	627	Valdosta	
14	Quitman	4,638	3,850	Valdosta	
	Charlton	10,282	12,171		
15	Folkston	2,178	2,502		
16	Homeland	765	910		
	Clinch	6,878	6,798		
17	Argyle	151	212		
18	Du Pont	139	120		
19	Fargo	380	321		
20	Homerville	2,803	2,456		
	Coffee	37,413	42,356	<i>Douglas</i>	
21	Ambrose	320	380	<i>Douglas</i>	
22	Broxton	1,428	1,189	<i>Douglas</i>	
23	Douglas	10,639	11,589	<i>Douglas</i>	
24	Nicholls	1,008	2,798	<i>Douglas</i>	
	Cook	15,771	17,212		
25	Adel	5,307	5,334		
26	Cecil	265	286		
27	Lenox	889	873		
28	Sparks	1,755	2,052		
	Echols	3,754	4,034	Valdosta	
	Irwin	9,931	9,538	<i>Fitzgerald</i>	
29	Ocilla	3,270	3,414	<i>Fitzgerald</i>	
	Lanier	7,241	10,078	Valdosta	Valdosta
30	Lakeland	2,730	3,366	Valdosta	

	County/City	2000 Pop.	2010 Pop.	MSA/ μ SA	MPO
	Lowndes	92,115	109,233	Valdosta	Valdosta
31	Dasher	834	912	Valdosta	Valdosta
32	Hahira	1,626	2,737	Valdosta	Valdosta
33	Lake Park	549	733	Valdosta	Valdosta
34	Remerton	847	1,123	Valdosta	Valdosta
35	Valdosta	43,724	54,518	Valdosta	Valdosta
	Pierce	15,636	18,758	<i>Waycross</i>	
36	Blackshear	3,283	3,445	<i>Waycross</i>	
37	Offerman	403	441	<i>Waycross</i>	
38	Patterson	627	730	<i>Waycross</i>	
	Tift	38,407	40,118	<i>Tifton</i>	
39	Omega	1,340	1,221	<i>Tifton</i>	
40	Tifton	15,060	16,350	<i>Tifton</i>	
41	Ty Ty	716	725	<i>Tifton</i>	
	Turner	9,504	8,930		
42	Ashburn	4,419	4,152		
43	Rebecca	246	187		
44	Sycamore	496	711		
	Ware	35,483	36,312	<i>Waycross</i>	
45	Waycross	15,333	14,649	<i>Waycross</i>	
	Region Total	364,925	406,583	2 MSA/4 μSA	1 MPO

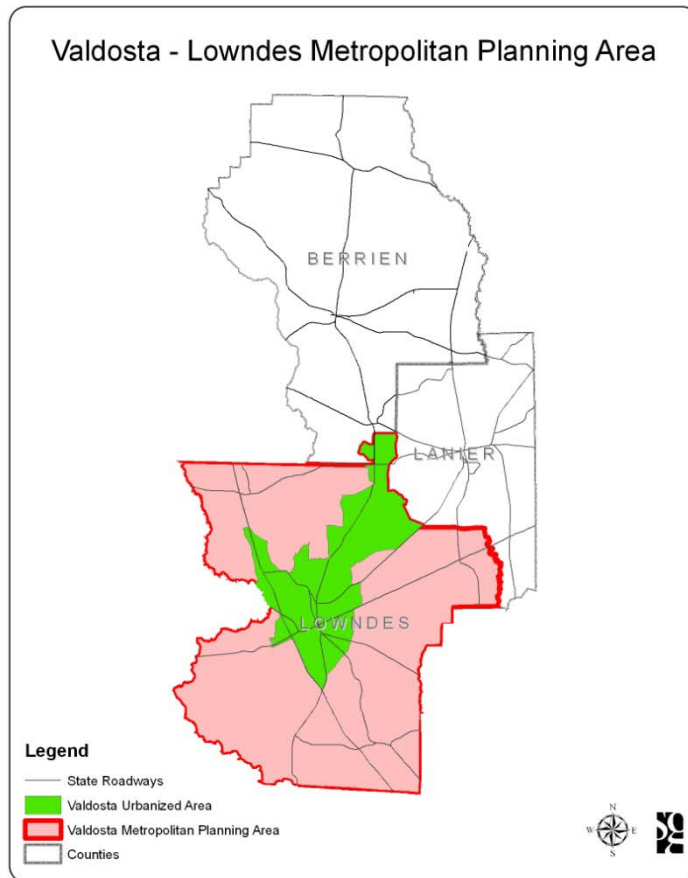
Counties 18
 Cities 45

Micropolitan and Metropolitan status based on 2000 Census

Micropolitan Communities in Italics

Only jurisdictions in MPO boundary are included, not all cities in a county may be included

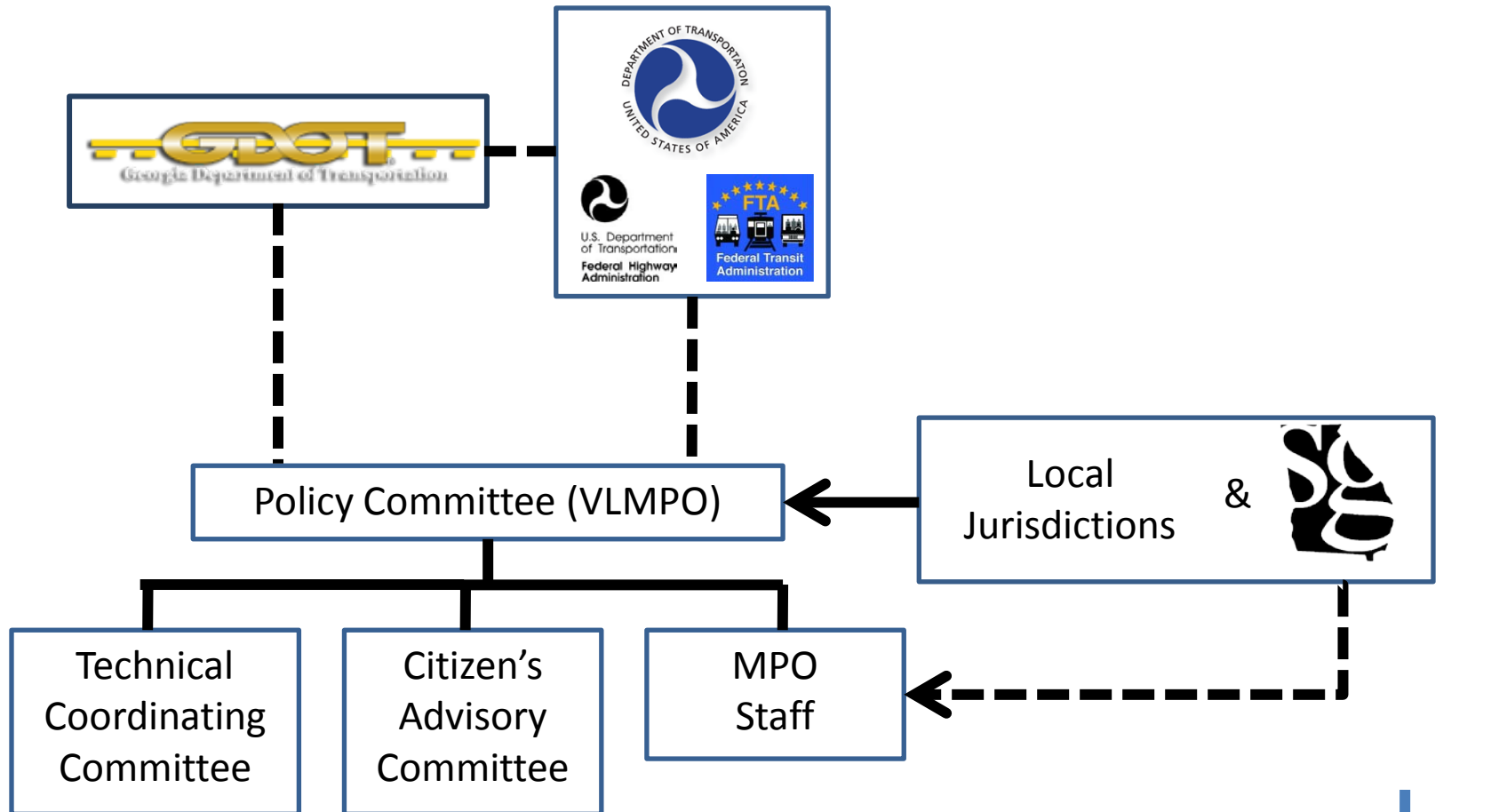
Valdosta – Lowndes MPA



- Metropolitan Statistical Area
- Urban Area
- Urbanized Area
- Metropolitan Planning Area



VLMPO Organization



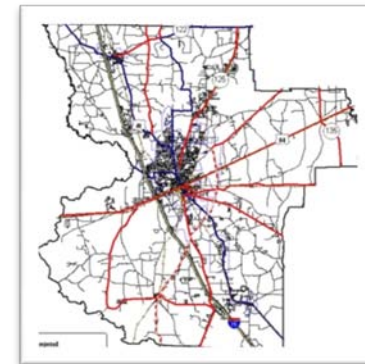
VLMPO Policy Committee

- Committee Structure
 - Local Elected Officials
 - GDOT
- Committee Role
 - Make Transportation Policy in V-L MPA
 - Guide staff in developing reports, documents, and plans



VLMPO Policy Committee

- Determine what the key transportation needs of the community are
- Develop goals and solutions to meet these transportation needs
- Prioritize solutions to best meet needs



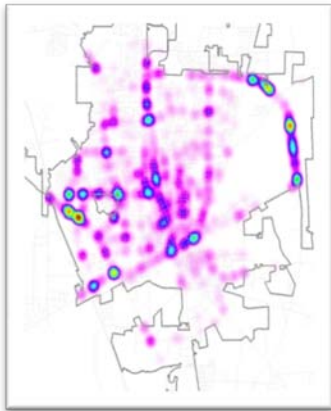
VLMPO Technical Committee

- Committee Structure
 - Local Engineers
 - GDOT Planners and Engineers
- Committee Role
 - Advise Policy Committee on Transportation Policy from a technical perspective
 - Assist staff if carrying out TP and TIP



VLMPO Technical Committee

- Technical = Data Driven, Expert Opinion
- Aid decision makers in providing technical advise
- Guide MPO staff in the development of plans and reports



VLMPO Citizen's Advisory Committee

- Committee Structure
 - Local citizens
 - Local stakeholder groups
 - Appointed by local governments
- Committee Role
 - Advise Policy Committee from a public perspective
 - Assist staff in carrying out Public Involvement Process



VLMPO Citizen's Advisory Committee

- Group of transportation stakeholders
 - Various viewpoints coming together to provide consensus recommendations
- Evaluate reports, documents and plans
 - Ensure values and interests of the community
 - Reaction Group – Information dissemination
- Public Participation Plan implementation



VLMPO Staff

- Carryout Annual UPWP
 - Outlines Annual activities of the MPO
- Develop Reports, Documents and Plans
 - Follow 3-C's process to develop required and other informative reports and plans to aid in the decision making process
- Provide educational opportunities for decision makers
 - Presentations and speakers on topics of interest



Transportation Planning Areas

- Long Range Planning
 - Socioeconomic Analysis
 - Travel Demand Modeling
- Short Range Planning
- Land Use Planning
- Freight Planning
- Intelligent Transportation Systems
- Access Management
- Safety/Security Planning
- Transit Planning
- Bike/Pedestrian Planning
- Environmental Mitigation
- Context Sensitive Solutions
- Others...
- (Air Quality Planning)

